

NEWTEC

the world leaders



Celox RV12

- grades by both length/diameter/square size and quality
- robustly constructed in stainless steel, ensuring a reliable machine in the heart of the production
- ensures a consistent output quality, in accordance to individual demands – again ensuring optimization of raw materials
- very fast change over time and a user-friendly interface – using touch screen technology
- the Celox RV12 has double the capacity of earlier models
- handles potatoes from 18 to 103mm diameter and from 20 to 200mm long
- reduces the consumption of raw materials by approx. 1.5% – adding direct value to the bottom line
- designed in stainless steel with completely sealed cabinets for easy cleaning and maintenance

NEWTEC A/S
Stærmossegårdsvej 18
DK-5230 Odense M
Denmark

T: +45 66 15 84 44
F: +45 66 15 44 39

E: mail@newtec.dk
www.newtec.com

CELOX RV12

NEWTEC

the world leaders

speed
accuracy
quality
reliability
versatility

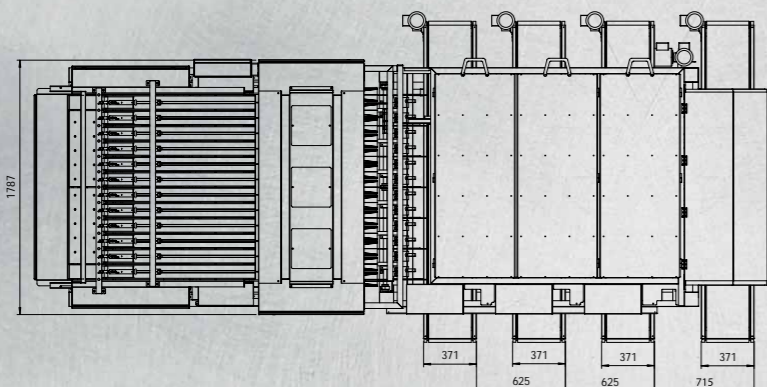
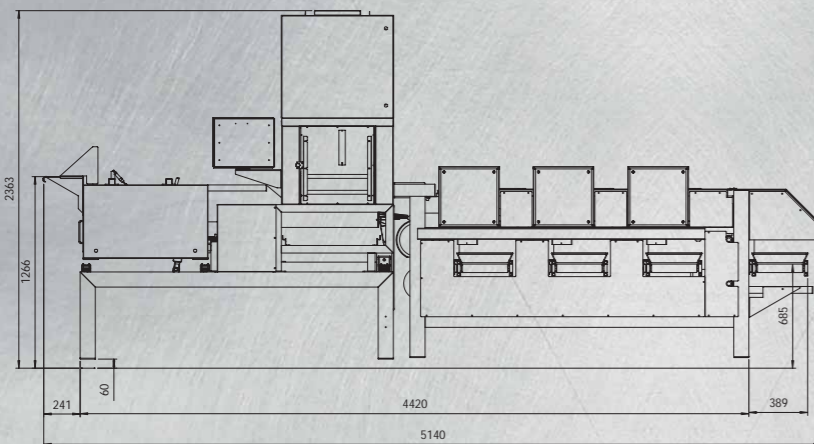
new Spinaflex system robustly constructed
in stainless steel ensures consistent quality
output fast change over time



Technical Data

Air requirement:
Approx: 40 NL./min at 7 bar

Electrical requirement:
3 x 380 or 3 x 230 V.
15 A 3 KW



individuality customization flexibility add value

The camera unit

All potatoes are rotated through a camera unit, while one of three cameras photographs each potato up to 40 times. The information obtained determines the exact length, diameter and surface condition of the potato. The data captured is then evaluated by high speed computer which decides how the potato will be graded – all in accordance with the chosen parameters entered into the touch screen interface.

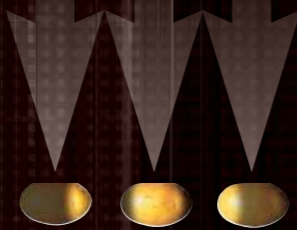


The infeed section

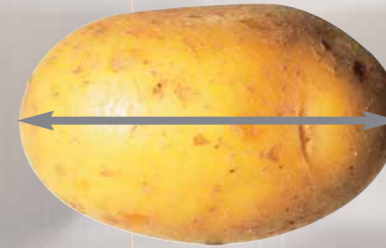
This consists of 12 vibrating channel feeders, ensuring gentle and efficient separation of the potatoes.

Complete Surface Coverage

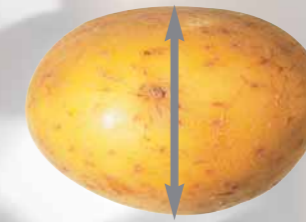
The whole surface of each potato is exposed to the camera as it passes through the camera section.



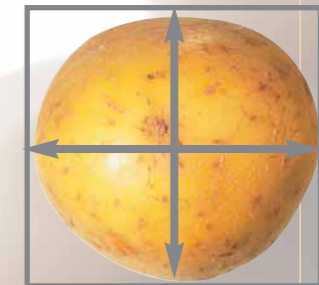
Grading By Size



Length



Diameter



Square Measure

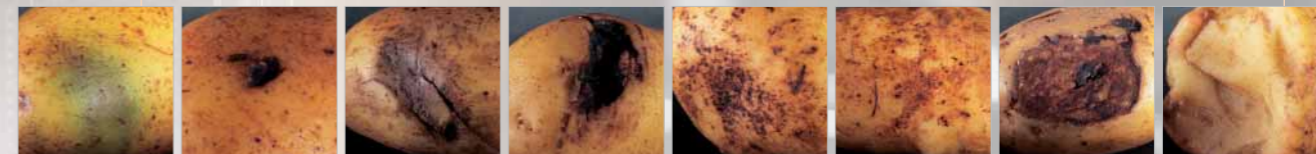
Capacity*

Potatoes of	30g:	~4,5 tonnes/hour
Potatoes of	80g:	~10 tonnes/hour
Potatoes of	300g:	~20 tonnes/hour

* subject to trial with the customer's potatoes

Grading By Quality

The revolutionary CELOX RV12 does not only grade by size. The Celox also grades by quality which includes the following:



Green

Black Spot

Grey Damage

Rot

Scurf

Silver Scurf

Dry Cuts

Fresh Damage

Celox RV12 Impacts On

- Labour cost
- Increased throughput
- Higher earnings per tonne
- Making customization a financial reality
- Production flexibility
- "On demand" production
- Extremely fast change over time
- High value per m² in the production area

Add Value

On average the Celox RV12 will reduce the consumption of raw materials by 1,5%.

Eg: Out of 1,000 tonnes, 15 tonnes of good potatoes will NOT be rejected, but graded as correct. With an average price of just 100 Euro per tonne this alone adds 1500 Euro per 1,000 tonnes to the bottom line.



User-Friendly

Easy access to all functions is obtained through the Touch Screen. Touch and go...



The Spinaflex Outlets

Upon exiting the camera section the potatoes are smoothly and gently placed on the Spinaflex unit. Once reaching the area above the specified outlet, the Spinaflex is triggered by electro-magnetic impulses and the potato is delivered. Available with 3 - 12 outlets.



celox rv12